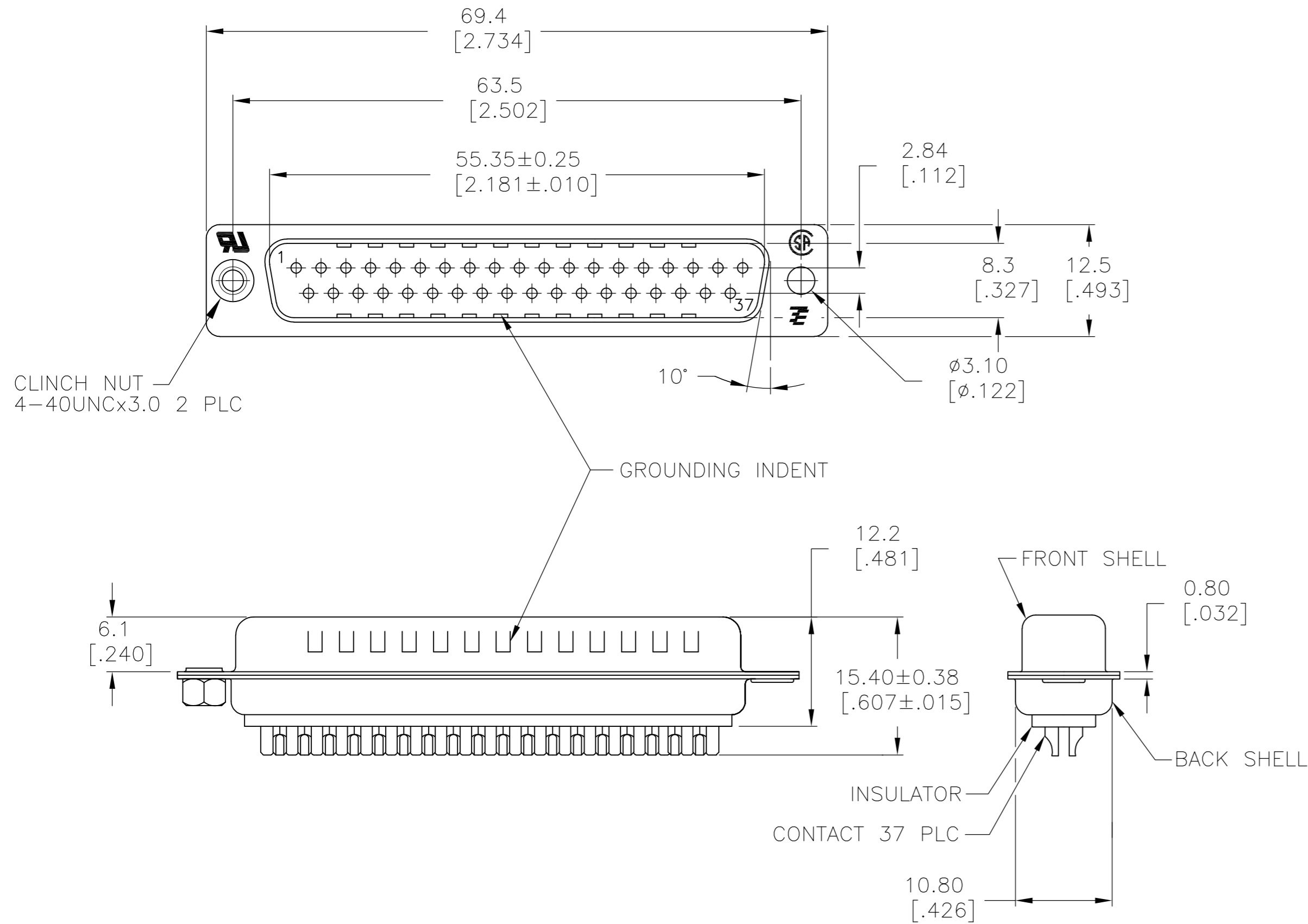


THIS DRAWING IS UNPUBLISHED. RELEASED FOR PUBLICATION  
 © COPYRIGHT - By - ALL RIGHTS RESERVED.

LOC		DIST		REVISIONS			
P	LTR	DESCRIPTION		DATE	DWN	APVD	
GP	00	W		REVISED PER ECO-15-010090	16JUL2015	AP	DG



- 1 MATERIAL:  
FRONT INSULATOR: PBT, 30 %GF, UL94V-0, BLACK COLOR  
BACK INSULATOR: PBT, 30 %GF, UL94V-0, BLACK COLOR  
CONTACT: BRASS  
FRONT SHELL: STEEL  
BACK SHELL: STEEL  
CLINCH NUTS: BRASS
- 2 FINISH:  
CONTACT: GOLD PLATING 0.00002[.0000008] MIN ON CONTACT AREA 0.00229 [.000090] MIN TIN-LEAD PLATING ALL OVER 0.00127[.000050] MIN NICKEL
- 3 CONTACT: GOLD PLATING 0.00076[.000030] MIN ON CONTACT AREA 0.00229 [.000090] MIN TIN-LEAD PLATING ALL OVER 0.00127[.000050] MIN NICKEL
- 4 SHELL: BRIGHT TIN 0.00241[.000095] MIN FULL SHELL
- 5 SHELL: BLUE ZINC: 0.00508[.000200] - 0.00762[.000300] OVER ENTIRE SHELL
- 6 CONTACT: GOLD PLATING 0.00002[.0000008] MIN ON CONTACT AREA 0.00229 [.000090] MIN HOT DIPPED TIN-COPPER PLATING ALL OVER 0.00127[.000050] MIN NICKEL
- 7 CLINCH NUTS: NICKEL PLATING .00305-.00508[.000120-.000200]
- 8 SPECIFICATION  
ELECTRICAL CHARACTERISTICS: CURRENT RATING: 3 AMPERES  
DIELECTRIC WITHSTANDING VOLTAGE: AC 1000V r.m.s  
INSULATION RESISTANCE: 5000 MEGOHMS MINIMUM AT DC 500V  
CONTACT RESISTANCE: 10 MILLIOHMS MAXIMUM.
- 9 ROHS 2002/95/EC COMPLIANT
- 10 PLUG ASSEMBLY MATES WITH ANY 37 POSITION RECEPTACLE IN AMPLIMITE SERIES
- 11 SOLDER CUP WILL ACCOMMODATE 20 MAX AWG WIRE.
- 12 CONTACT: GOLD PLATING 0.00076[.000030] MIN ON CONTACT AREA 0.00229[.000090] MIN HOT DIPPED TIN-COPPER ALL OVER 0.00127[.000050] MIN NICKEL PLATING
- 13 OBSOLETE PARTS: OBSOLETE CIS STREAMLINING PER D.RENAUD/D.SINISI

REVISION	DESCRIPTION	DATE	BY	CHK	APVD	PRODUCT SPEC	APPLICATION SPEC	WEIGHT	SCALE	SHEET	REV
13	OBSOLETE	STANDARD	NO	NO	6	5	5-747916-4				
13	OBSOLETE	STANDARD	YES	YES	6	4	5-747916-6				
9	STANDARD	NO	YES	12	4	5-747916-5					
9	STANDARD	NO	YES	6	4	5-747916-2					
	SUPERSEDED TO 5-747916-2	STANDARD	NO	YES	6	4	747916-7				
	SUPERSEDED TO 5-747916-6	STANDARD	YES	YES	2	4	747916-6				
	SUPERSEDED TO 5-747916-5	STANDARD	NO	YES	3	4	747916-5				
	SUPERSEDED TO 5-747916-4	STANDARD	NO	NO	2	5	747916-4				
	SUPERSEDED TO 5-747916-2	STANDARD	NO	YES	2	4	747916-2				
	PACKAGING TYPE		7	CLINCH NUTS		GROUNDING INDENTS					
						CONTACTS					
						SHELLS					
						PART NO.					

THIS DRAWING IS A CONTROLLED DOCUMENT. DIMENSIONING AND TOLERANCING PER ASME Y14.5M-2009

DWN: M. BINNER 04MAR03  
 CHK: R. BENDORF 05MAR03  
 APVD: R. BENDORF 05MAR03

TE Connectivity

PLUG ASSEMBLY, SOLDER CUP, SIZE 4, 37 POSN, HD-20, AMPLIMITE

SIZE: A2 CAGE CODE: 00779 C=747916

SCALE: 2:1 SHEET: 1 OF 1 REV: W